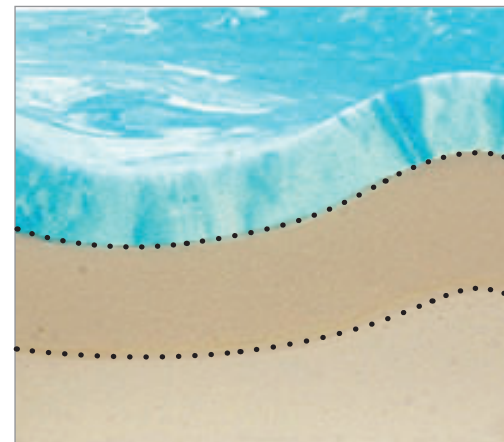


MATRIX® MULTI CUSHION



The **Matrix® Multi Cushion** is designed with unique three part foam combination providing maximum immersion and comfort without sacrificing long lasting durability and support. The innovative top BreZZy Gel Foam layer offers softer exceptionally comfortable feel and a mild cooling effect — a popular choice for highly sensitive users or those requiring extra immersion and comfort.





Outer Cover

- Reversible Startex™ outer cover – can be used fabric or wipeable side out
- Moisture resistant and breathable for comfort
- Includes hook and loop strips and orientation diagram

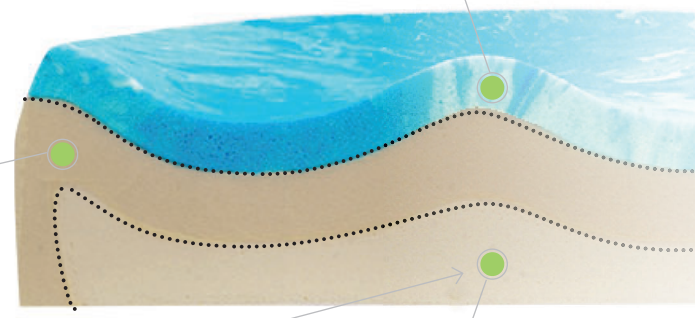


Inner Cover

- Zippered, wipeable Startex™ inner cover for extra moisture protection
- Easy access for cushion modifications

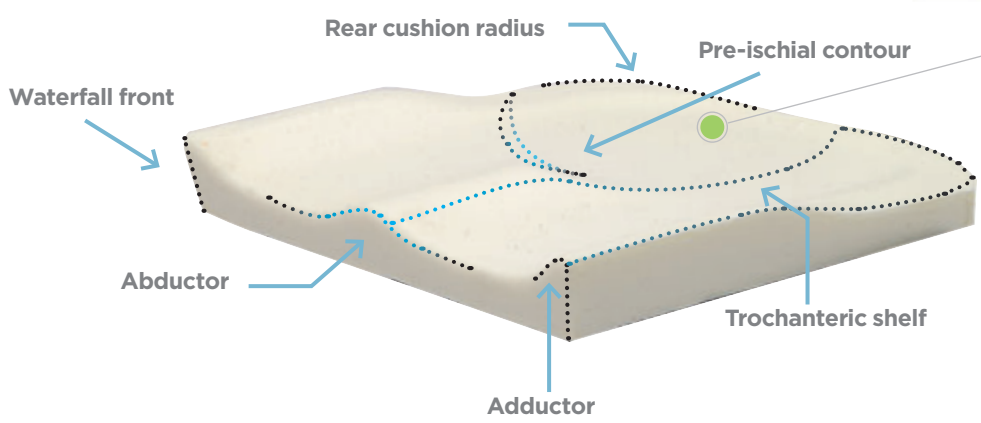
Top Layer

- BreZZy Gel foam with softer more comfortable feel and a mild cooling effect



Middle Layer

- Co-molded viscofoam for optimal immersion and skin protection



Bottom Layer

- High Resiliency foam with multiple molded in positioning features
- Maximum durability designed to prevent bottoming out

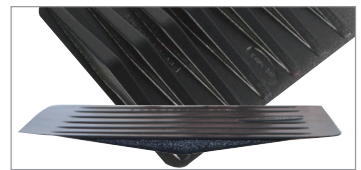
Options



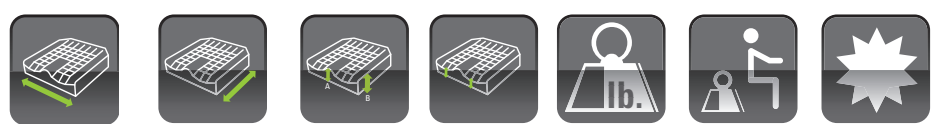
Custom Modifications – Leg length discrepancies, special sizes



POK – Pelvic Obliquity Kit (2 pieces)



Cushion Rigidizer alleviates hammock effect of upholstery



Model #	Width	Depth	Height Abductor/Adductor	Height at Leg Trough	Product Weight	Weight Capacity	Limited Warranty
MULTI (Standard)	14", 16", 17", 18", 20"	16", 18", 20"	5"	4"	3.8 lb. and up	300 lb.	2 Years
MULTI (HD)	22"	16", 18", 20", 22"	5"	4"	4.4 lb. and up	600 lb.	2 Years

Motion Concepts
www.motionconcepts.com
info@motionconcepts.com

USA
700 Ensminger Rd., Suite 112
Tonawanda, NY 14150
(888) 433-6818
Fax: (888) 433-6834

Canada
84 Citation Dr., Unit 1-7
Concord, ON L4K 3C1
(866) 748-7943
(905)-695-0134
Fax: 905-695-0138

© 2022
Matrix is a registered trademark of Motion Concepts. Specifications are subject to change

TRD0677 Rev A

